

Unleashing the Value of Citizen Contributions

Friederike Klan¹, Christian Hüttich², Sina Truckenbrodt³, Thomas Hübner⁴, Christian Thiel¹

¹Citizen Science Group, DLR Institute of Data Science, Jena

²Remote Sensing Group, University of Würzburg

³Department for Earth Observation, Friedrich-Schiller-University, Jena

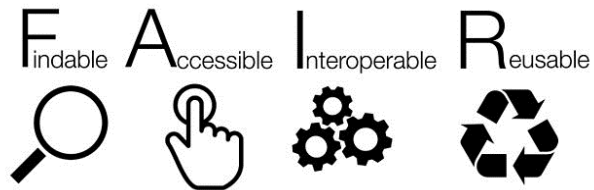
⁴Team Phenology, Zentralanstalt für Meteorologie und Geodynamik, Vienna

Geneva, June 4th 2018



Unleashing the value of Citizen Contributions by ...

... making them
fit for (re)use



Significance Precision Accuracy Coverage Subjectivity Consistency Objectivity Distribution Trustworthiness Resolution Completeness



... and facilitating the
generation of insights



Reusable Software Tools & Best Practices



Making CS Data Fit for (Re)Use



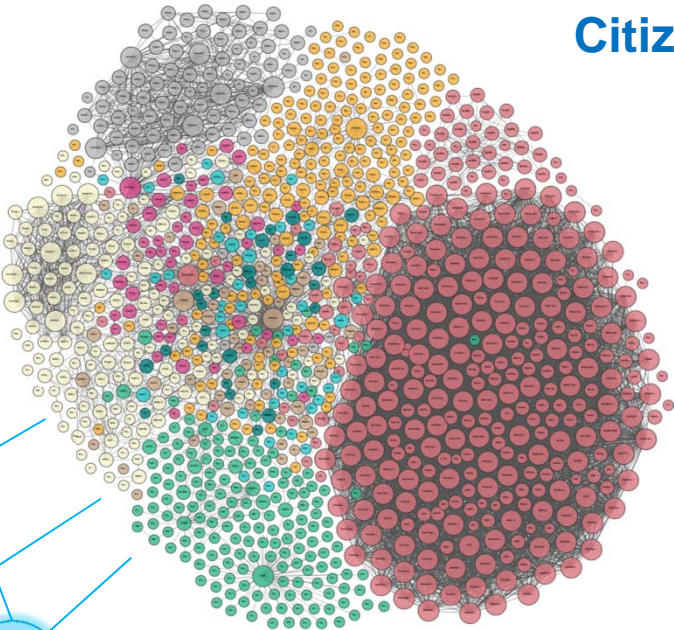
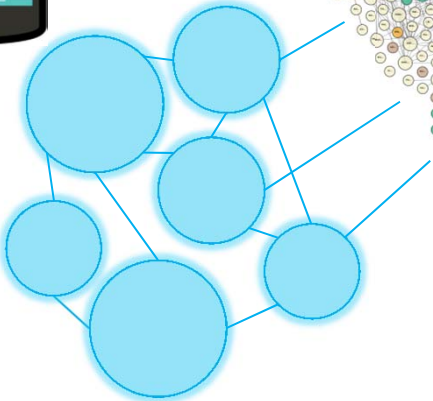
**Software Components for
Citizen Observers:
App-Based Localization and
Navigation in the Field**



Making CS Data Fit for (Re)Use

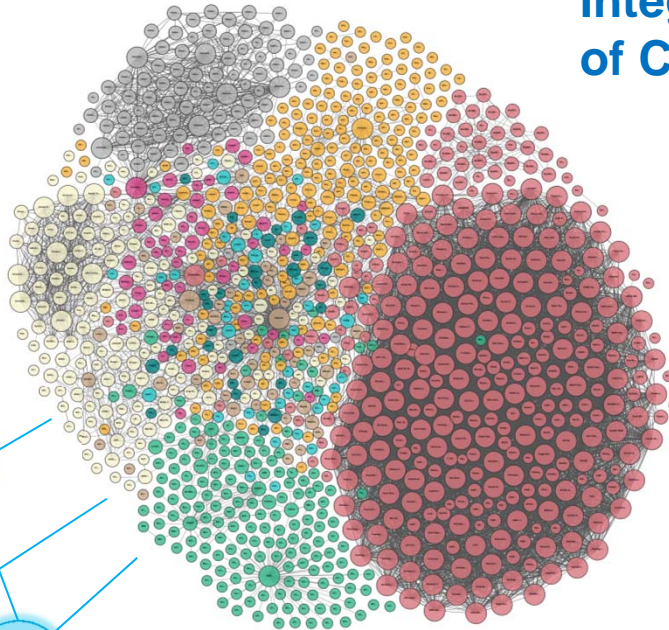
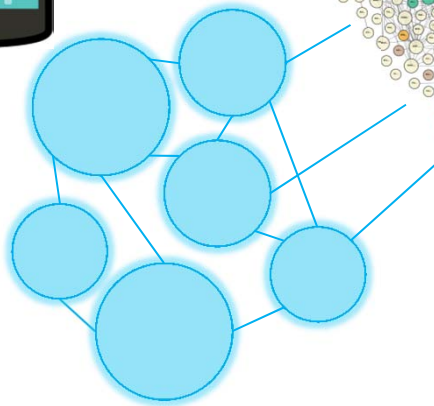
Open, Interlinked and
Machine-Comprehensible
Citizen Science Data

Citizen Data + Metadata

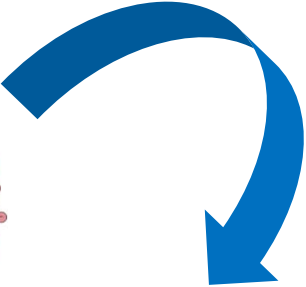


Gaining Insights

Citizen Data + Metadata



Discovery, Access,
Integration and Visualization
of Citizen Science Data



Gaining Insights

visualization

discovery

**DATA &
KNOWLEDGE**

integration

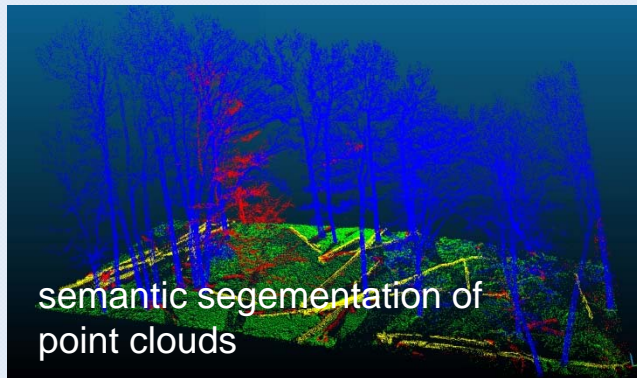
exploration



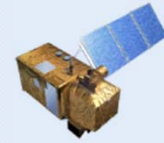
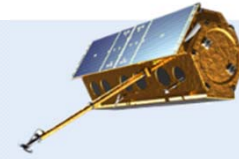
Gaining Insights



**information extraction
facilitated by citizens**



semantic segmentation of point clouds



**enriching data
contributed by citizens
to address critical
problems**





Friederike Klan

Citizen Science Group, DLR Institute of Data Science, Jena

Contact: friederike.klan@dlr.de



Image Sources

- <https://en.wikipedia.org>
- <https://openclipart.org>
- <https://www.publicdomainpictures.net>

